



Technical informations

BETTINA Sedan N1010

62,000€



Propulsion energy	diesel
Number of cabins	3
Drinking Water Reservoir	600 L
Engine time	1364
Engine Manufacturer	Nanni 4/50
Max Water Draft	0.85 Mètre
Passengers	12
Engine type	inboard
Fuel tank	300 L
Number of beds	6
Year	2003
Toilets	2
Showers	2
Width	3.7 mètres
Length	10 mètres
Tare weight	7100 Kgs
Engine power	50 CV
Color	white white
Equipment	anchor, Battery, Bluetooth connector, Bridge, CD player, Cockpit speakers, Convertisseur, Évier, Extinguisher, feux de navigation, Freezer, Gas cookers, Gas detector, Heater, Installation d'eau chaude, Mp3 player, Oven, Plateforme de bain manuelle, Pompe de cale, Prise de quai, Radio, Réfrigérateur, Swim ladder, Taud de flybridge, WC électrique

BETTINA Sedan N1010

62,000€



BETTINA Sedan N1010

62,000€



This boat is available in October 2025 & can be visited in our nautical base in Bellegarde (Département 30 / Languedoc-Roussillon). The Nicols 1010 from the Sedan range is an ideal canal barge for a family or two couples and two children. The boat comprises three double cabins (one of which has approx 100 cm [...])

This boat is available in October 2025 & can be visited in our nautical base in Bellegarde (Département 30 / Languedoc-Roussillon).

The Nicols 1010 from the Sedan range is an ideal canal barge for a family or two couples and two children. The boat comprises three double cabins (one of which has approx 100 cm headroom above the bunk) and two shower rooms making it comfortable for six people.

Large windows mean the living room is full of light with 360° panoramic views and the kitchen is fully fitted. The Nicols 1010, like all the boats in the Sedan range, is so popular with customers thanks to the ground level rear deck with a garden living space and sun awning ☑ perfect for eating outdoors. A second steering position and seating on the top deck also helps the captain and crew make the most of the sun!

The NICOLS®-boatyard is:

A French builder and charterer, with 35 years of experience,
a varied range adapted to customer demand,
new models and continuous innovations,
an elegantly designed, sophisticated fleet,
bright, spacious and airy cruisers,
boats suited for families, with maximum safety
nautical bases on a human scale (exclusive to NICOLS®)
and presence in the most beautiful regions of France as well as in Germany, the Netherlands, Hungary and Portugal.

Our river cruisers are rigorously maintained throughout the season, with dry storage every winter where an examination and full, meticulous service of the deck and hull are performed, accompanied by anti-fouling.

The advantages of NICOLS® service:

Thanks to our network of bases across France, some bases can offer you their services. They have the benefit of full knowledge of our boats combined with real expertise, providing the following:

- Mooring your boat,
- Wintering with repairs, etc.
- Fitting additional equipment
- Obtaining your licence

After Sales Service / Spare parts:

Since NICOLS® is a builder and charterer, we have a warehouse within our boatyard containing spare parts and other accessories. We remain at your disposal at all times to offer you advice and services.

The annual maintenance budget:

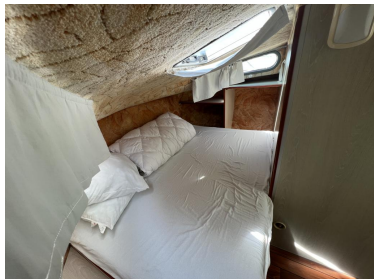
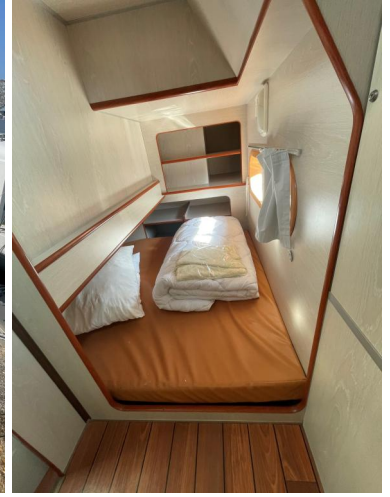
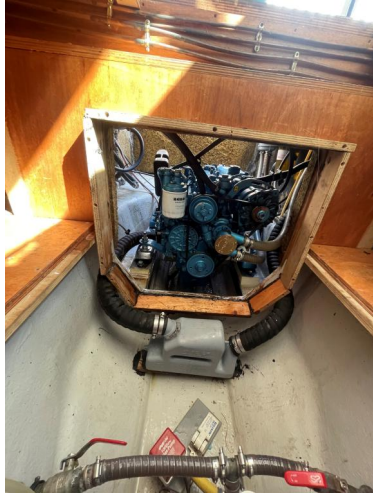
The fact that NICOLS® boats are designed with a polyester hull means they have a very low maintenance budget; their simple, practical and rational design, originally created for charter, also contributes to this low maintenance cost.

As an owner, you should plan to have your boat serviced on land every 3 to 4 years. Other than that, in the same way as a car, it is a question of ongoing maintenance (oil change).

You didn't find the perfect boat under our offers? Please do not hesitate to contact us and let us know what you are looking for and we will find a suitable boat for you.

BETTINA Sedan N1010

62,000€



BETTINA Sedan N1010

62,000€



Our contact informations

Are you interested in this model and would you like more information? **Do not hesitate to contact us. Nicols**
Route du Puy Saint Bonnet 49300 Cholet - France **02 41 56 46 56**